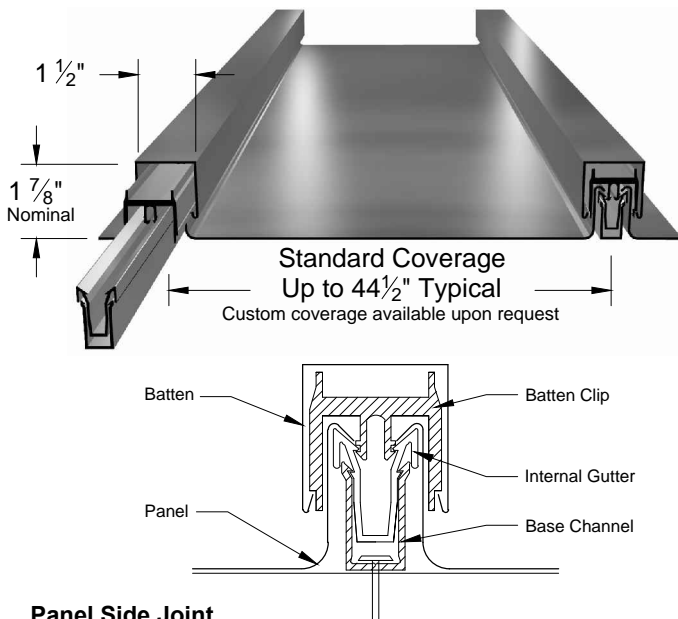


BD-1520

BD1520 Pan & Batten System



Panel Side Joint

Unique batten and pan design allows for both longitudinal and lateral curvatures. Internal gutter system provides weathertight sidejoint without use of sealant.

Applications

Architectural roofing designed for domes, radius barrels and straight or conical tapers. Continuous lengths up to 45 feet.

Substrates

Solid deck / plywood or Rigid insulation over decking.
Requires minimum 30# felt underlayment and rosin slip sheet.

Materials

Aluminum (3000 series alloy)
Copper & lead coated Copper
Stainless Steel
Zinc
Galvalume/Galvanized

Standard Gauges

.032" .040" .050"
16 oz. 20 oz.

Finishes

Kynar & Metallic Fluoropolymer Coatings
Mill Finish, Brushed, Anodized
Texture: Smooth or Stucco Embossed

Manufacturing

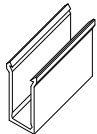
Factory Formed

Testing / Agency Approvals

Underwriters Laboratory ASTM E-330 ASTM E-331

Some panels configurations are not suitable for all applications.
Contact sales & engineering for more information.

Components

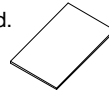


Base Channel

.060 Continuous extruded aluminum base channel. Anchors to substrate.

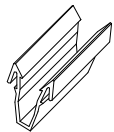
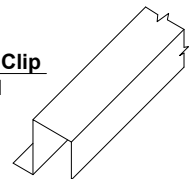
Bearing Plate

6" x 3" 22 ga. galvanized.
For base support over rigid insulation.



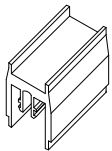
Continuous Gable/Endwall Clip

Made from the same material required for the project.
Supplied in 10'-0" lengths.



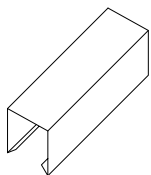
Internal Gutter

.060 Continuous extruded aluminum continuous gutter channel. Snaps into base channel.



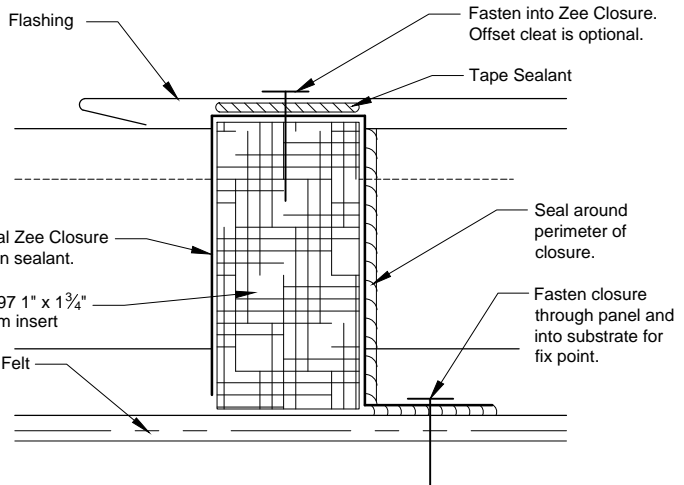
Batten Clip

.080 4" extruded aluminum clip. Snap on internal gutter at 12" on center.



Formed Batten

Aluminum batten. Roll formed to match the pan.
1 1/2" x 1 1/2" nominal.

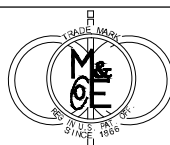


Ridge & Hip Closure System

100' closed cell foam and 10' metal Zee closure.
Cut foam & metal closure to suit between ribs

Updated December 2011

Merchant & Evans, Inc.
308 Connecticut Drive
Burlington, NJ 08016



Phone: 800-257-6215
Phone: 609-387-3033
Fax: 609-387-4838
www.ziprib.com