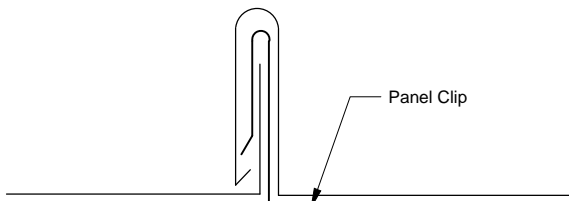
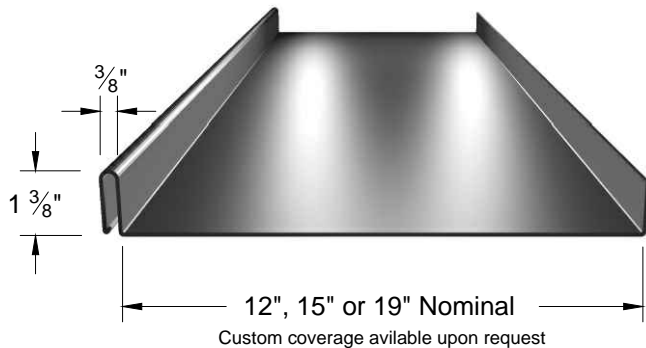


"Classic Rib" Series 305 Standing Seam Panel



Panel Side Joint

Popular integral batten, narrow seam with snap-fit side joint design permits fast and easy installation.

Applications

Architectural roofing on slopes 3" or greater.
 Continuous lengths up to 45 ft. Vertical walls, conical tapers.

Substrates

Solid deck / Plywood or Rigid insulation over decking
 Requires minimum 30# felt underlayment and rosin slip sheet.

Materials

Aluminum (3000 series alloy)
 Galvanized coated steel (G-90)
 Alum-Zinc coated steel (AZ-50 & AZ-55)
 Copper & lead coated Copper

Standard Gauges

.032" .040"
 24 ga. 22 ga.
 24 ga. 22 ga.
 16 oz. 20 oz.

Also available in Zinc, Pre-Weathered Zinc & Stainless Steel

Finishes

Kynar & Metallic Fluoropolymer Coatings
 Mill Finish, Brushed, Anodized
 Texture: Smooth or Stucco Embossed

Manufacturing

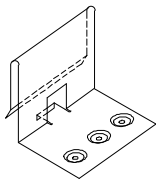
Factory Formed

Testing / Agency Approvals

UL-90 Uplift ASTM E-331 ASTM E-283

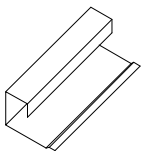
Some panels configurations are not suitable for all applications.
 Contact sales & engineering for more information.

Components



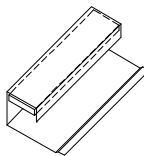
#305 Clip

One piece 24 gauge galvanized steel clip. Allows for free movement of panels during thermal expansion and contraction. Also available in Stainless Steel.



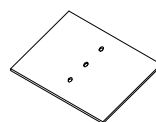
Gable/Endwall Clip

Continuous clip made from the same material required for the project. Supplied in 10'-0" lengths.



Sealed Gable/Endwall Clip

1/2" x 1 3/8" Closed cell, adhesive applied foam supplied in 100' lengths(#3068). Cut to suit and Insert into continuous gable/endwall clip supplied in 10'-0" lengths.



Punched Bearing Plate

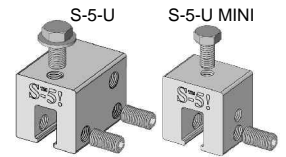
6" x 6" 22 ga. galvanized.
 For clip support over rigid insulation.

Seam Trim

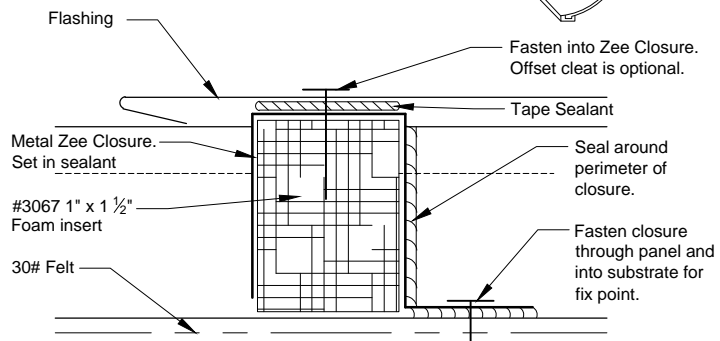
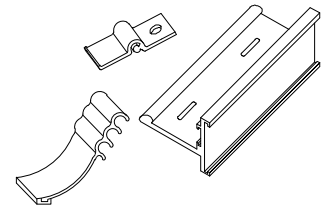
Rib knee transition.
 Supplied in 10'-0" lengths.



S-5-U & S-5-U Mini Clamp
 Aluminum block for use with S-5! snow retention system and for other practical purposes.



S-5! ColorGard
 Snow Retention System
 Refer to PS-12 for more information.



Ridge & Hip Closure System

100' closed cell foam and 10' metal Zee closure.
 Cut foam & metal closure to suit between panel ribs.

Updated December 2011

Merchant & Evans, Inc.
 308 Connecticut Drive
 Burlington, NJ 08016



Phone: 800-257-6215
 Phone: 609-387-3033
 Fax: 609-387-4838
 www.ziprib.com